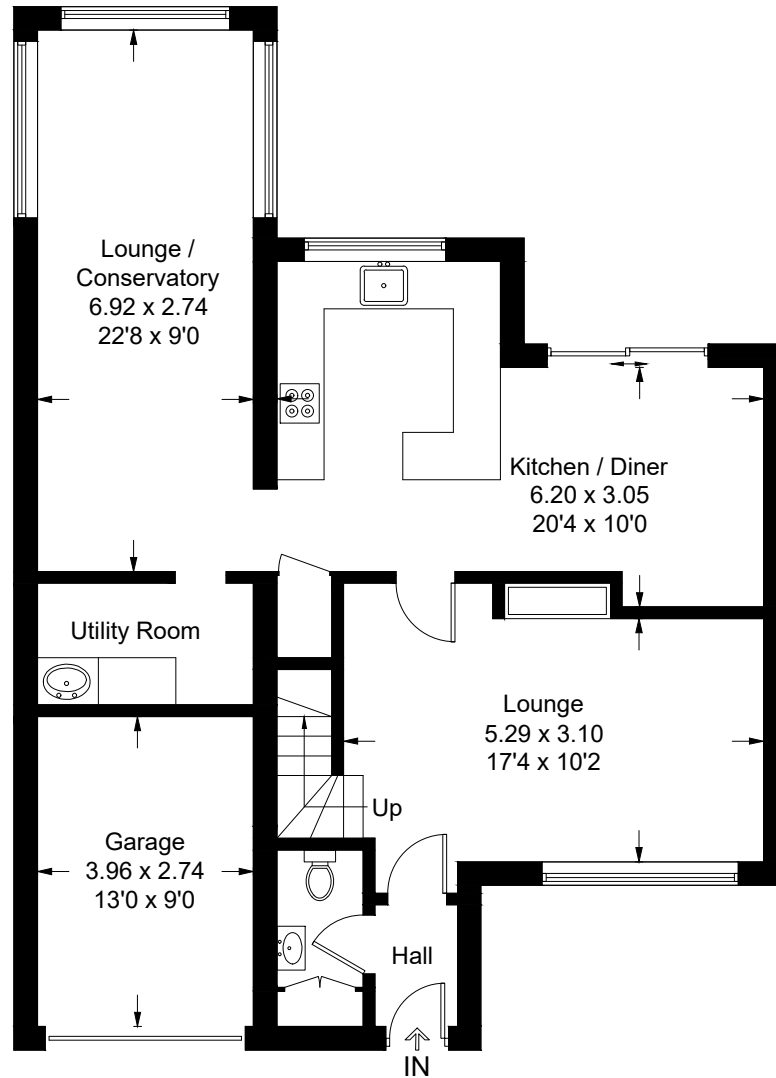


86, Plymyard Avenue, Bromborough

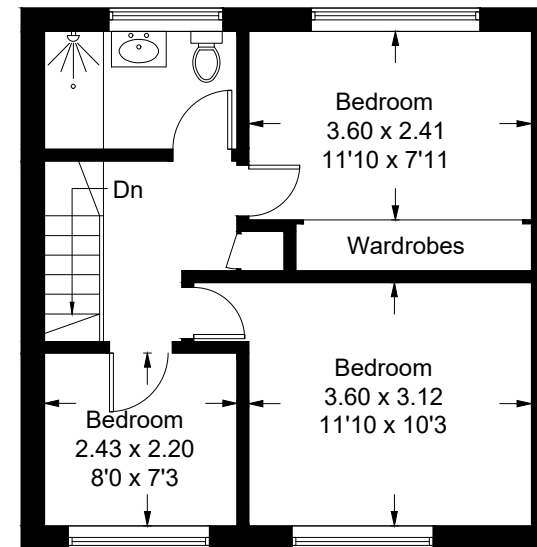
Approximate Gross Internal Area = 112.6 sq m / 1212 sq ft

Garage = 10.9 sq m / 117 sq ft

Total = 123.5 sq m / 1329 sq ft



Ground Floor



First Floor

Illustration for identification purposes only, measurements are approximate, not to scale. floorplansUsketch.com © (ID766366)